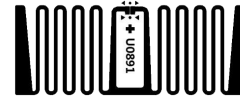


H1641MR6/P

UHF RFID Inlay



Specification

Physical Characteristics

Antenna Dimension	16x41 mm
Inlay /Tag Dimension	19x44 mm
Antenna Pitch	15.875 ± 0.500
PET Width	105.00 ± 1.00

Electronic Characteristics

Protocol	EPC Class 1 Gen 2/ISO 18000-6C
Manufacture / IC	IMPINJ Monza R6-P
EPC / TID / User Memory	128bits/96bits/32bits
Base Material	PET
Face Stock	N/A
Antenna	Etched Aluminum (10μm)+ PET (50μm)
Operating Frequency	FCC, ETSI
Operating Mode	Passive
ESD Voltage Immunity	Max.2000V Human being mode(HBM)

Environment & Package

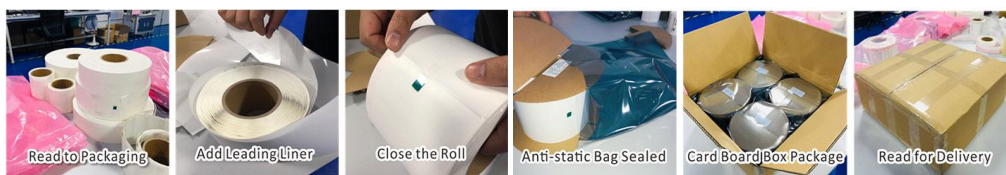
Operating Temperature	-40°C to +85°C
Storage Temperature	-40°C to +85°C
Static Pressure	<10 MPa
Package	5000 pcs/roll, 4 rolls/carton

Delivery Formats

Available Formats	Dry Inlay, Wet Inlay, RFID Tag
Quality	100% tested with out-of-tolerance inlay marked
Inner Core Diameter	76 mm/3 inch

Package Info.:

ESD package box 5,000pcs/roll, 4 or 8 rolls/ctn. Packing in roll for printing and cutting at customer



The information contained on this Document is considered to be confidential material proprietary to HUAYUAN, and this information shall not be disclosed, duplicated or copied for any purpose, Nor made available for any third party without the prior consent to HUAYUAN.----- 1 / 1