

# How to Properly Install RFID UHF Laundry Tag

HUAYUAN offers several options of RFID UHF Laundry Tag to apply on textiles. Determining the best selection depends on the textile type and the laundry processes. Our experts willing to assist you for your application.

Tips to help get a best possible results:

- \* In order to not affect RFID laundry tag's performance, install the tag **away from the textile folding lines, close to the textile corners.**
- \* Seams must **NEVER** pass through transponder's central core module.

## Stitch Tagging (SE) // HLT-5512-SE / HLT-7015-SE

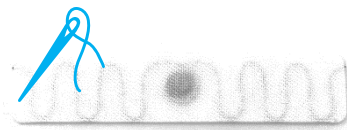
To be stitched into the hem of a textile.

### \* How to stitch?

- 1, Place the laundry tag inside the textile. Sewing lines surround tag's extremities.
- 2, Stay less than 5mm from the tag's edge when stitching.
- 3, Pay special attention to not damage your sewing facility if you stitch over the antenna wire extremities. Stitch must **NEVER** pass through the core module.

### \* Where to stitch?

Stitch the laundry tag away from the folding lines.



## In Pouch (PO) // HLT-5512-PO / HLT-7015-PO

To be stitched like a standard care label.

### \* How to stitch?

Place the pouch **BELOW** the hem. Fix the pouch **BELOW** the hem. Fix the pouch one along each side. Stitches must **NEVER** pass over the laundry tag's antenna wire or the core module.

### \* Where to stitch?

Stitch the laundry tag away from the folding lines.

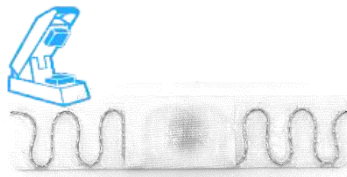


## Heat Sealing (HS) // HLT-5512-HS / HLT-7015-HS

To be heat-sealed directly on the textile at +195°C (383°F), for 30s.

### \* How to heat sealed?

- 1, Place clean and dry textile under the heat-sealing machine.
- 2, Place the adhesive side of the tag on textile flat surface, avoiding any relief and folding line.



## Hanging (HT) // HLT-5512-HT / HLT-7015-HT

To be hung with the brand label.

### \* How to hang?

Punching a hole on the narrow side of the laundry tag.

### \* Where to stitch?

Hanging the laundry tag with brand label.

